

Connie Sue, Inc.



It's just Stuff!

How will I know if it's antique or modern? Should I have the fine linens laundered? Does it matter that I've painted the pie safe green?! Can I get any money for these pottery planters? What do you mean this set of dishes is out of style?

Become a knowledgeable buyer or seller in one day at my *American Antiques Class*, May 20th. [You are a click away](#) from registering or choosing other classes and events.



"This event reaffirmed the depth of history, knowledge and emotion that our possessions can elicit..."

Cindy J. Natsch, President and Founder
of [Let's Get Moving!](#)

"Watching the anticipation of the crowd as their treasures were appraised was joyous; listening to the stories surrounding their treasures was priceless".

[Mary Brown](#), Seniors Divisions of Century 21 Dawson & Associates, Inc.

I appraised pottery, art, costume jewelry, silver, bronze, unusual family artifacts, and lots of dolls at Legacy Crossing in Franklin, TN last weekend. Participants learned history, value, and care of antiques while enjoying chef Thomas Overstreet's fine treats.

As I waved goodbye to Legacy Crossing director, Becky Hendricks, she called out 'Let's do another one this winter!'

Dear Connie Sue,

I was excited to see your column in the Williamson AM. This lamp was inherited by my grandmother from our Aunt, her sister-in-law when Aunt Camille died. They actually lived together as long as I remember and when grandma died, I became the keeper of the lamp.

It is extremely heavy, glass and maybe cast iron? The metal surrounding the glass originally was painted. All of the metal is now a dark bronze color. The glass is like an old stained glass and it is held in place by metal tabs that bend into the glass. For some reason the rim of glass around the crown of the lamp was painted red when we got it.

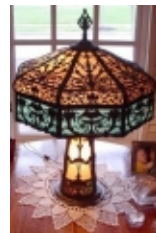
It has a bulb in the stand and two bulbs under the shade. The base of the lamp has N.W.A.S. Co. stamped on it.

We appreciate anything you can tell us about grandma's lamp.

Steve Cretin, Franklin

Dear Steve,

Your lamp is made of marble glass often called slag glass. Some thought 'slag' from the iron smelting works was added to cause the striations. The metal is aluminum sand cast iron with what looks like a brass plating. The lighted base and exceptionally decorated metal work places the value at around \$2,200. The N.W.A.S. Co. mark indicates Northwest Aluminum Specialty Co. out of Oregon. This corporation owned Chicago Aluminum Castings Co. who has been casting decorative and industrial items since 1910.



Look for my weekly column called *"Know Your Stuff"* in the [Williamson AM](#) every Friday

This email was sent to [email]. To ensure that you continue receiving our emails, please add us to your address book or safe list.

[manage](#) your preferences | [opt out](#) using TrueRemove™

Got this as a forward? [Sign up](#) to receive our future emails.